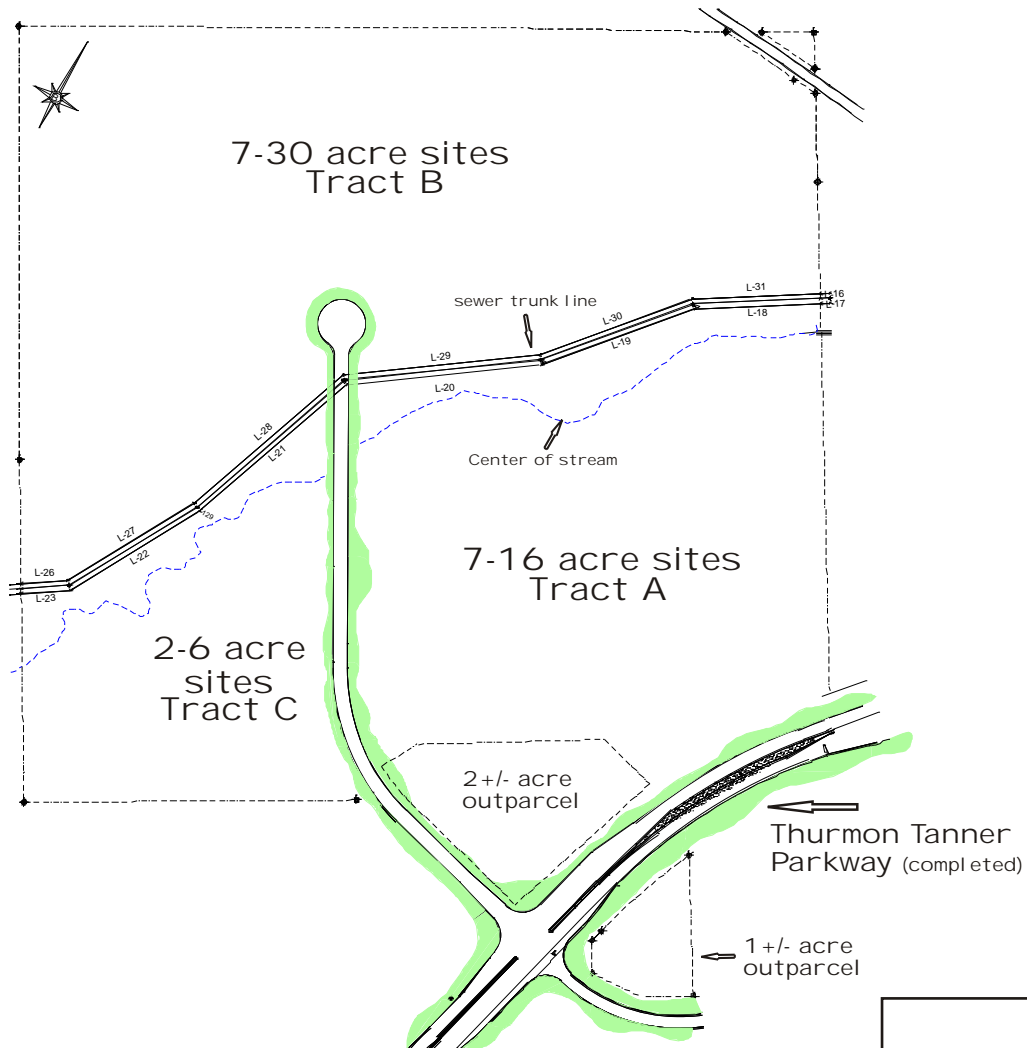


# Tanners Creek

a master-planned business park

Thurmon Tanner Parkway • Flowery Branch, GA 30542

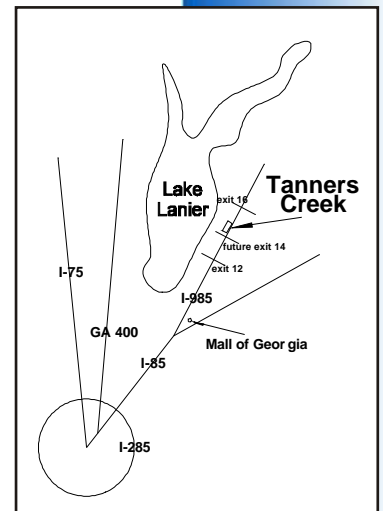
## the business park at Tanners Creek



- light industrial sites from 1 to 30 acres •
  - over 70 acres total •
  - gently rolling topography •
- all utilities including fiber available at the curb •
  - within a 150 acre mixed-use business park •
- highly landscaped and maintained environment •
  - comprehensive protective covenants •
  - restaurants, hotels, support retail nearby •
- new interchange on I-985 (exit 14) approved by GDOT •
- proximate to executive, middle and entry level housing •
- close to Lake Lanier, Gainesville College and Lanier Tech •

**contact Alex Wayne**

awayne@tannerscreek.com



770.967.6131

www.tannerscreek.com

# Tanners Creek

a master-planned business park

Thurmon Tanner Parkway • Flowery Branch, GA 30542

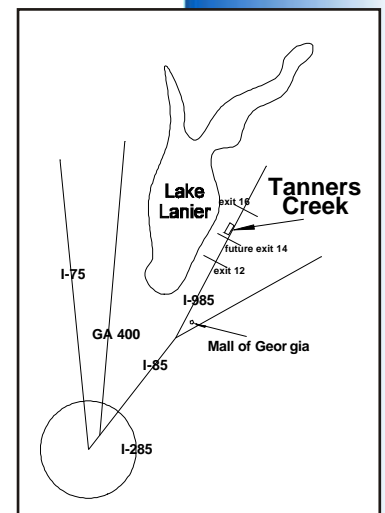
the business park at Tanners Creek



- light industrial sites from 1 to 30 acres •
  - over 70 acres total •
  - gently rolling topography •
- all utilities including fiber available at the curb •
  - within a 150 acre mixed-use business park •
- highly landscaped and maintained environment •
  - comprehensive protective covenants •
  - restaurants, hotels, support retail nearby •
- new interchange on I-985 (exit 14) approved by GDOT •
- proximate to executive, middle and entry level housing •
- close to Lake Lanier, Gainesville College and Lanier Tech •

**contact Alex Wayne**

awayne@tannerscreek.com



770.967.6131

www.tannerscreek.com