



Tanners Creek Signage Standards

- Every building site must include a monument sign built to the specifications of the attached plan (Corporate Sign Detail – Tanners Creek, by Roy Ashley & Associates).
- Signage on buildings is not allowed. All signage must be placed on the monument sign or doors.
- Signage/lettering on doors may be allowed if it meets the following specifications. Maximum area for the signage/lettering is 3'x3' and may only be located on the primary entrance door. A color proof of the signage/lettering must be approved in writing by the Tanners Creek Design Control Committee prior to installation.
- Street numbers shown on the attached plan must be black (flat) in color, 6" in height, and of the Times New Roman font.
- Street numbers can only be of the following materials:
 - Cast or routed aluminum, 3/4" thick, painted
 - Routed PVC, 3/4" thick, painted
 - Gemini – Minnesota Letters, 3/4" thick (Times Bold font)
- Logos or Company names can only be of the following materials:
 - Cast or routed aluminum
 - Routed PVC
 - Gemini – Minnesota Letters
- All signage, lettering, logos and company names must be approved in writing by the Tanners Creek Design Control Committee.

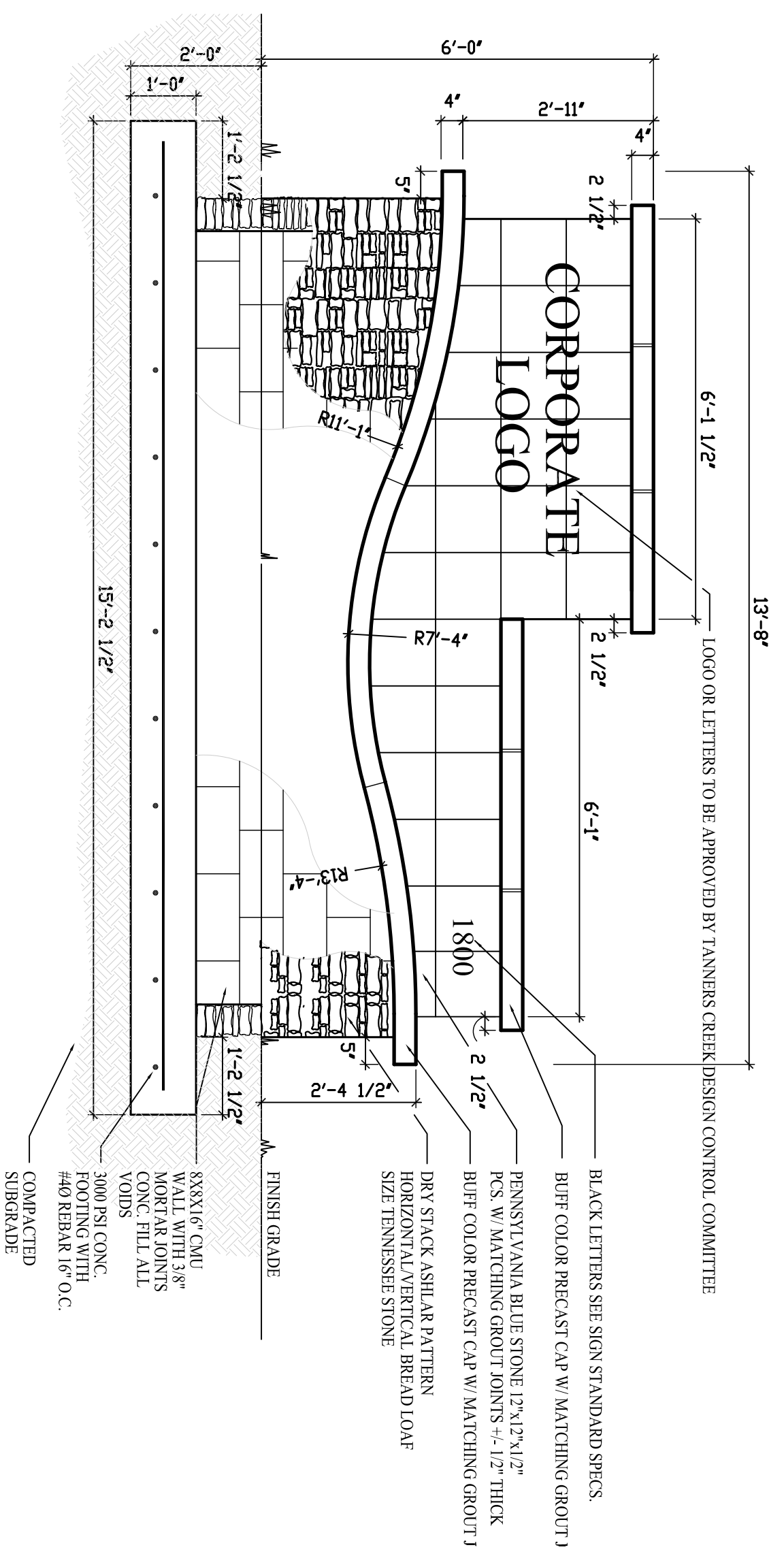
ROY ASHLEY & ASSOCIATES, INC.
 Landscape Architect / Land Planning
 600 Peachtree Street, N.E., Suite 400
 Atlanta, Georgia 30308
 Phone (404) 262-2800
 Fax (404) 262-4001

REVISIONS

CORPORATE SIGN DETAIL

Tanners Creek
 an office environment
FLOWERY BRANCH, GEORGIA

DATE	08/04/15
JOB NO.	2000
SCALE	1/2"=1'-0"
DRAWING BY	MAF
CHECK BY	MAF



SIGN ELEVATION

SCALE: 1/2" = 1'-0"

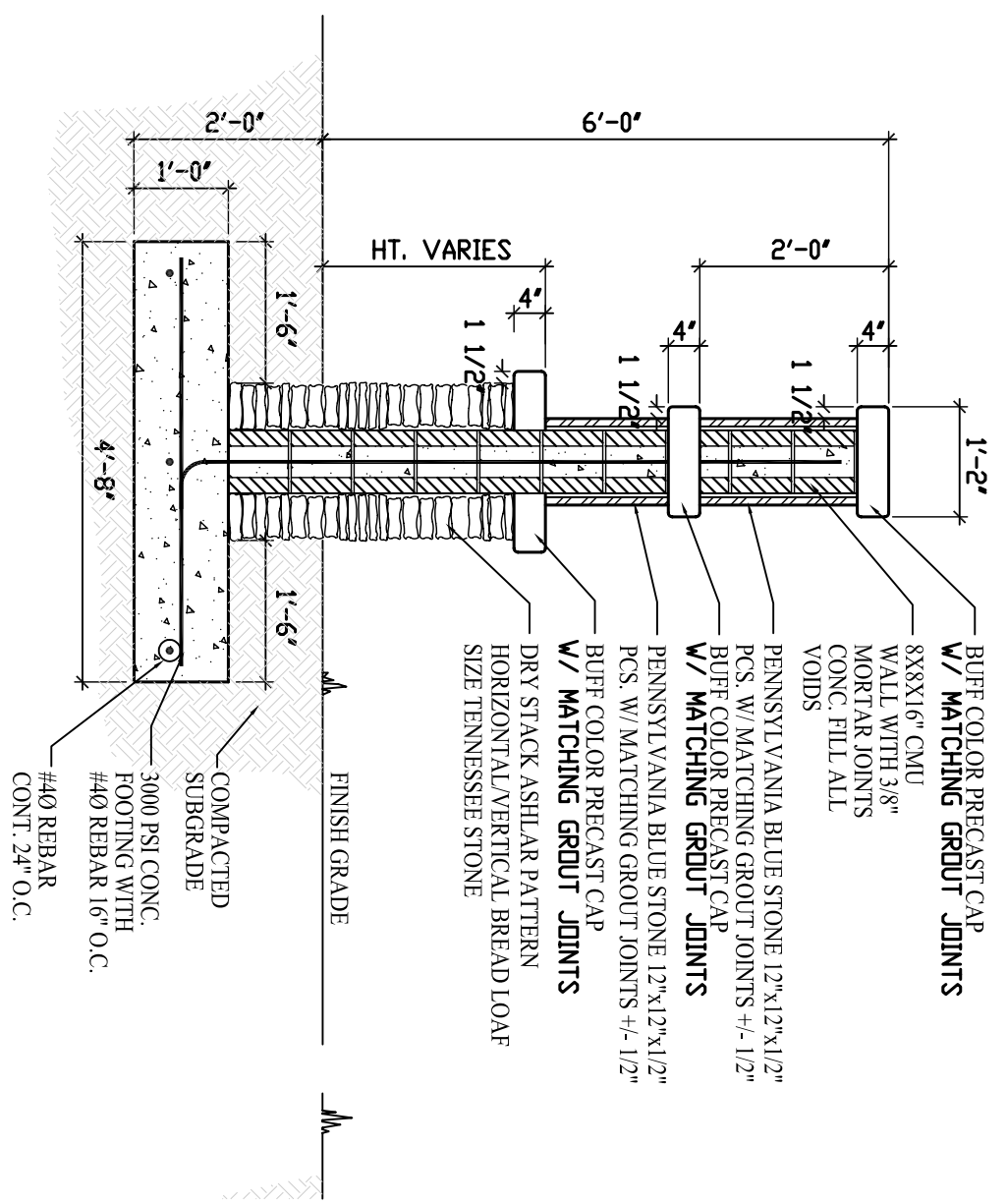
REVISIONS

CORPORATE SIGN DETAIL



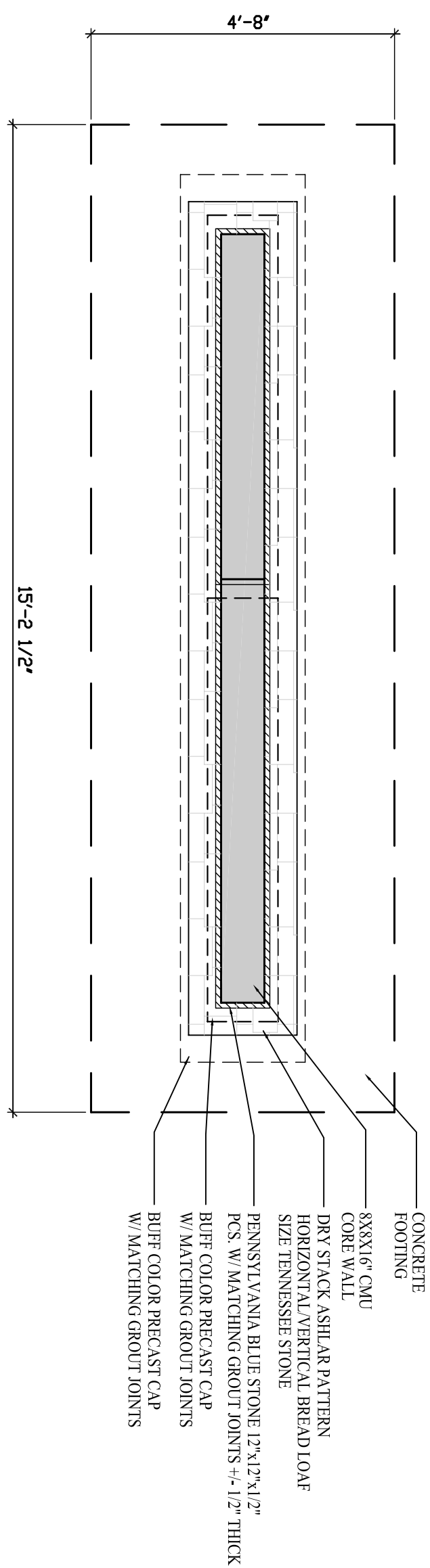
FLOWERY BRANCH, GEORGIA

DATE	BY
2008	2008
1/7/08	1/7/08
1/7/08	1/7/08
1/7/08	1/7/08
1/7/08	1/7/08



SIGN SECTION

SCALE: 1/2" = 1'-0"



FOOTING DETAIL

SCALE: 1/2" = 1'-0"